

# MEGA COMFORT™

WORK-LIFE WELLNESS SOLUTIONS

*Ergonomic Anti-Fatigue Safety Solutions*

---

**LD** **LINEDRIVE™**  
MAKING POWERFUL CONNECTIONS



# ***CONTENT***

- Introduction
- Increasing Risks for Companies
- Why MEGAComfort?
- Technology & Features
- Anti-Fatigue Comfort Line
- Protection Line
- Technology Line
- Effective & Result Driven
- How to Implement Insole Program



# ***INTRODUCTION***

---

# HISTORY AND **FUTURE**

As a work-life wellness company, MEGAComfort is committed to providing high quality work related wellness solutions, which are not only technologically advanced but are highly cost-effective.

As a leading insole provider to the industrial market, MEGAComfort pride's itself in developing products which provide solutions to customers across numerous industries, such as Food Processing, Warehouse/Logistics, Automotive, Service Industry, Government/Military, Oil & Gas, Medical/Health, Agriculture and Construction.

MEGAComfort values each relationship that they have built in the past decade and as a commitment, they are always available to answer any clinical questions in regards to MEGAComfort solutions.



**Dr. Kevan Orvitz, Founder and President**

A Podiatrist with over 20 years of experience from across the world. He has studied all aspects of biomechanics, and the human body as it relates to the lower extremity and the feet.



**Barbara Orvitz, CEO**

A intuitive entrepreneur and business leader, with over 2 decades of experience working in different continents in Business Strategy, Organisational Management, Logistics and Finance.

# ***VISION***

To lead the evolving workplace wellness and safety environment by providing cost effective footwear solutions which positively impact productivity and efficiency in a workplace. Our aim is to deliver solutions of the highest quality with a continuous commitment to innovation.

- ***COST EFFECTIVE SOLUTIONS***
- ***COMMITMENT TO INNOVATION***
- ***INCREASE PRODUCTIVITY AND WELLNESS***

# ***INCREASING RISKS FOR COMPANIES***

---



# INCREASING INJURY INCIDENTS

**32.2%** OF ALL INJURY INCIDENTS

Listed and accounted as  
**MUSCULOSKELETAL DISORDERS (MSD'S)**



**MSD'S (OVEREXERTION)**

**\$15.08 BILLION**  
IN DIRECT COSTS<sup>1</sup>

**SLIPS, TRIPS & FALLS**

**\$10.17 BILLION**  
IN DIRECT COSTS<sup>1</sup>

Source:  
1. 2016 Liberty Mutual Workplace Safety Index, America's Aging Workforce: Opportunities and Challenges.

# AGING WORKFORCE

**42.1** MILLION WORKERS OVER THE AGE 55 BY 2026<sup>2</sup>  
Projected INCREASE from 35.7 million in 2016



AGING WORKERS WILL MAKE UP NEARLY **ONE QUARTER** OF THE LABOR FORCE<sup>2</sup>

AGING WORKERS ARE **19.8%** MORE PRONE TO MSD

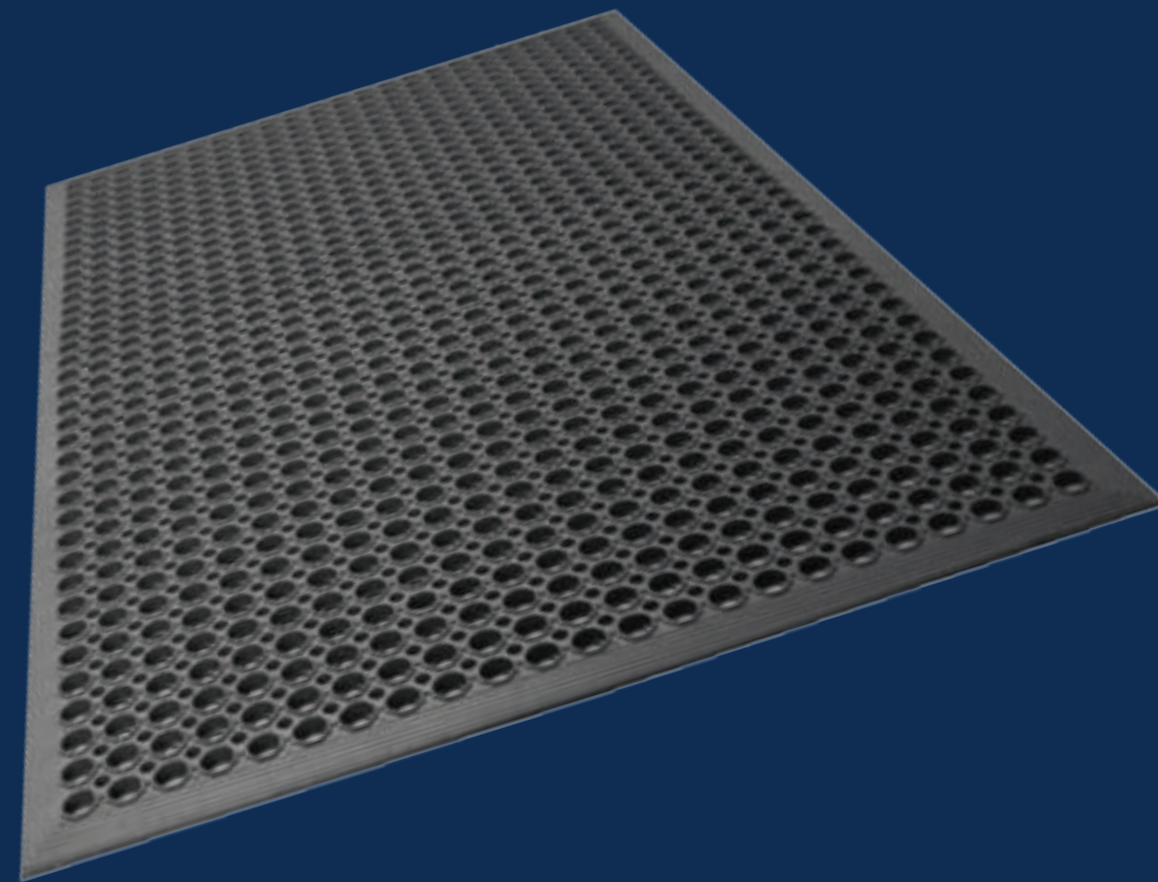
AGE: 25-34  
INCIDENCE RATE: 92.9<sup>3</sup>

AGE: 55-64  
INCIDENCE RATE: 115.8<sup>3</sup>

Source:  
2. Special Committee on Aging United States Senate, December, 2017  
3. <https://www.bls.gov/news.release/osh2.htm>



# INEFFECTIVE ANTI-FATIGUE SOLUTIONS



## ANTI-FATIGUE MATTING

Doesn't cover the 360-degree work area

Movement and gradual wear & tear causes the matting to curl

Regular cleaning and maintenance



## EFFECTS

More unprotected area's in the facility, increasing the chances of injuries

Increasing risk of slips trips and falls

Causes inefficiency and decrease in productivity



# ***WHY MEGACOMFORT?***

---



# UNLOCK. SOLUTIONS.



Ergonomically  
Designed by  
a Doctor



Clinically Proven &  
Field Tested to Reduce  
Pain & Fatigue



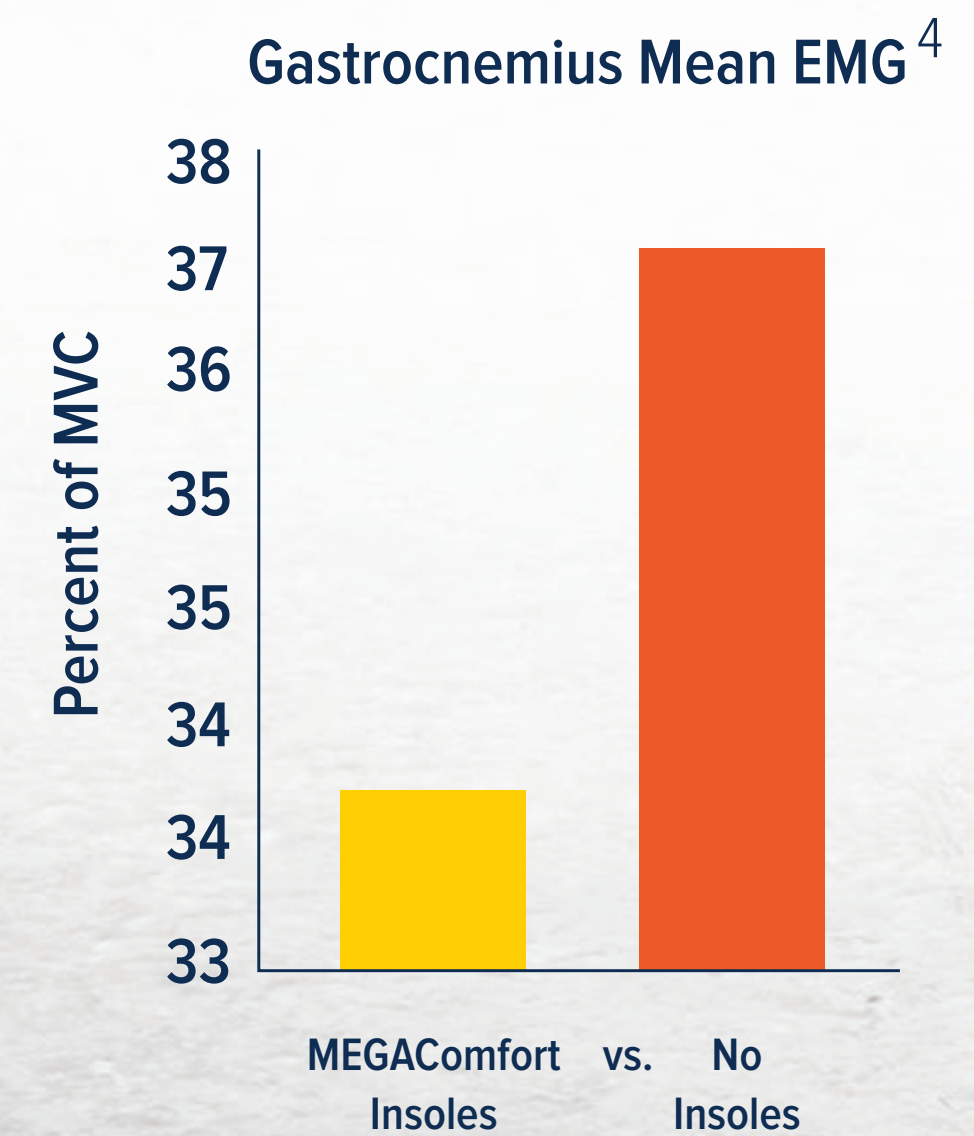
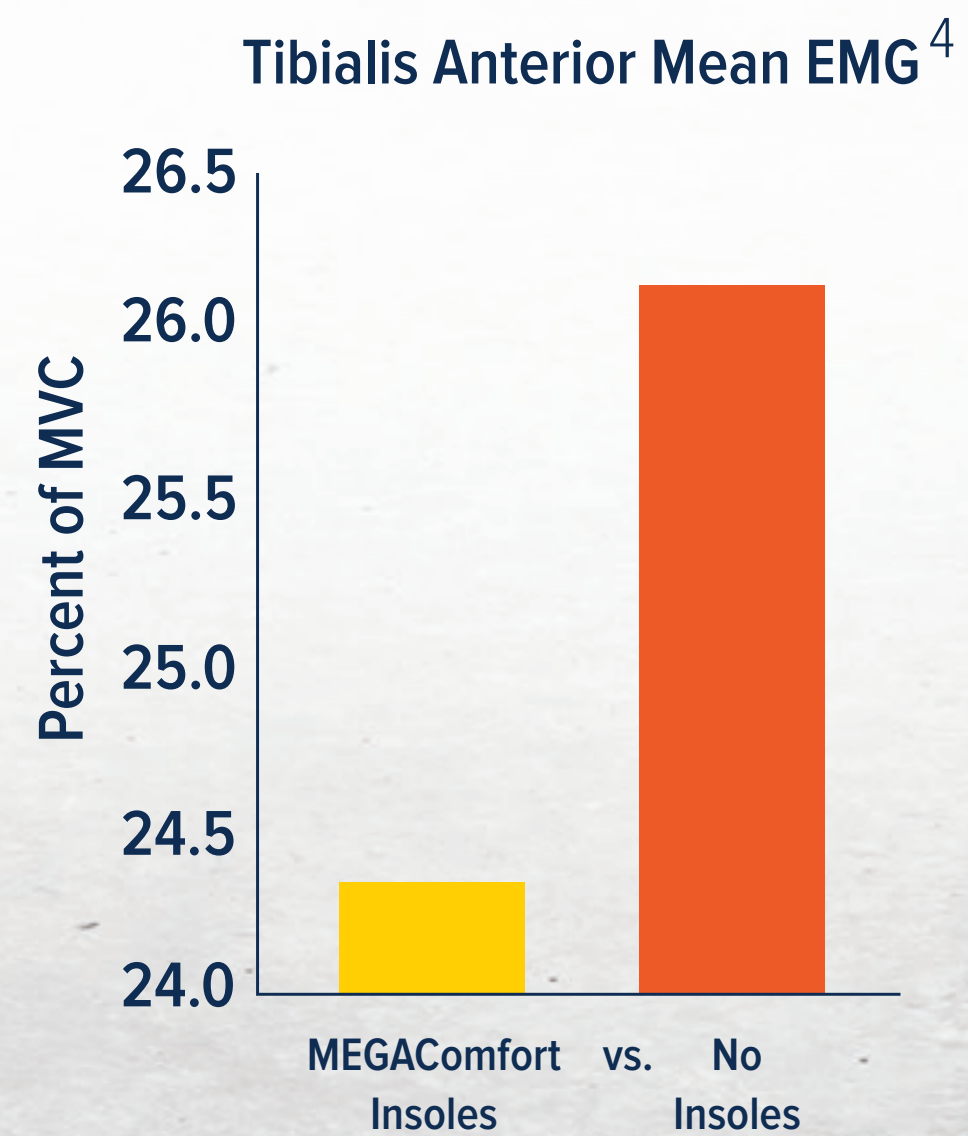
Over 15 Years  
of Research and  
Development



Cushioned Heel  
& Arch Support

# CLINICALLY PROVEN & FIELD TESTED

- To Reduce Foot, Knee & Back Pain by 35% on Average.
- To Reduce Muscle Fatigue - *EMG data revealed an overall reduction in lower extremity muscle activity by 9.6%.*



# **RISK** **AVOIDANCE AND REDUCTIONS**



Assist in ESD initiatives - reduce static charges from the employees



Protects from sharp objects such as shards of glass, metal & nails



Protection from extreme temperature

# **MEGACOMFORT INSOLES VS ANTI-FATIGUE MATTING**

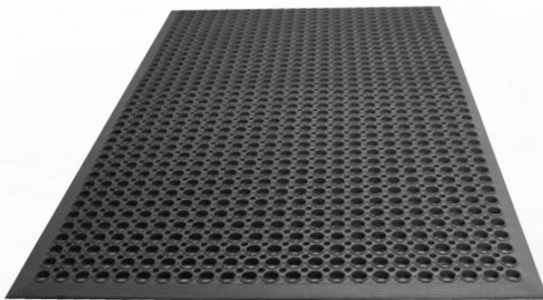
- Decreases - safety hazards such as slips, trips, & falls that cause sprains, strains
- 360-degree protection across entire facility, each work station, & beyond
- Implementation, maintenance, cleaning, replacement is fast, simple, & affordable
- Ease of implementation: Vend Friendly Packaging



# **MEGACOMFORT INSOLES VS ANTI-FATIGUE MATTING**

## **UNLOCK. SAVINGS.**

Example of cost savings in a factory of 250 workers



**MATTING COST  
PER WORKER  
\$180**

vs.



**INSOLES COST  
PER WORKER  
\$25**

**(\$180 - \$25) x 250 WORKERS**

**\$38,750**

Cost Savings with Insoles

# ***PAIN POINTS*** - SUMMARY

- Need ergonomic, comfort, anti-fatigue solution: Extended standing/walking on hard surface
- Reduce musculoskeletal disorders (MSD's) and resulting absenteeism and injury claims: Back, knee or foot pain
- Safer facility/OSHA compliance: Reduce slips, trips and falls
- Workplace cannot accommodate floor matting: Hygiene concerns or mobile workforce
- Cost: Matting is expensive to install, maintain, clean and replace.
- Preventative health and wellness: Addressing the needs of older and aging workers
- Unhappy with competing insole brands
- Risk from sharp objects such as shards of glass, metal and nails
- Need safety toe protection for visitors temporary or casual workers
- Protection from extreme temperatures



# ***TECHNOLOGY & FEATURES***

---

# **UNLOCK.** **TECHNOLOGY.**



Ultra High-Density Memory Foam Ergonomically molded for **MAXIMUM SHOCK ABSORPTION**

Soft Open-Celled Memory Foam reduces harmful shear force and provides **MAXIMUM COMFORT**

**PATENTED\* DUAL LAYER**  
**100% MEMORY FOAM**

\* Patent: US # 8,832,969

# UNLOCK. FEATURES.



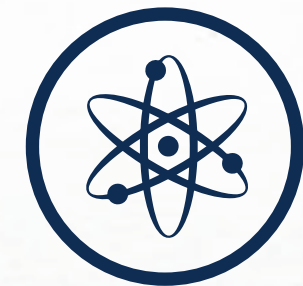
Ergonomically  
Designed by  
a Doctor



Clinically Proven &  
Field Tested to Reduce  
Pain & Fatigue



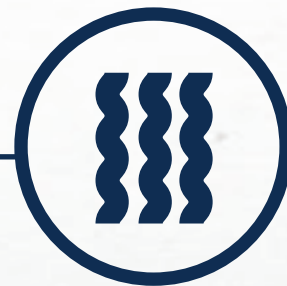
Over 15 Years  
of Research and  
Development



Silver Ion  
Anti-Microbial  
Technology



Anti-Fungal  
Anti-Bacterial  
Anti-Perspiration



Odor  
Reducing



Aeration Holes  
to Regulate  
Temperature



Cushioned Heel  
& Arch Support



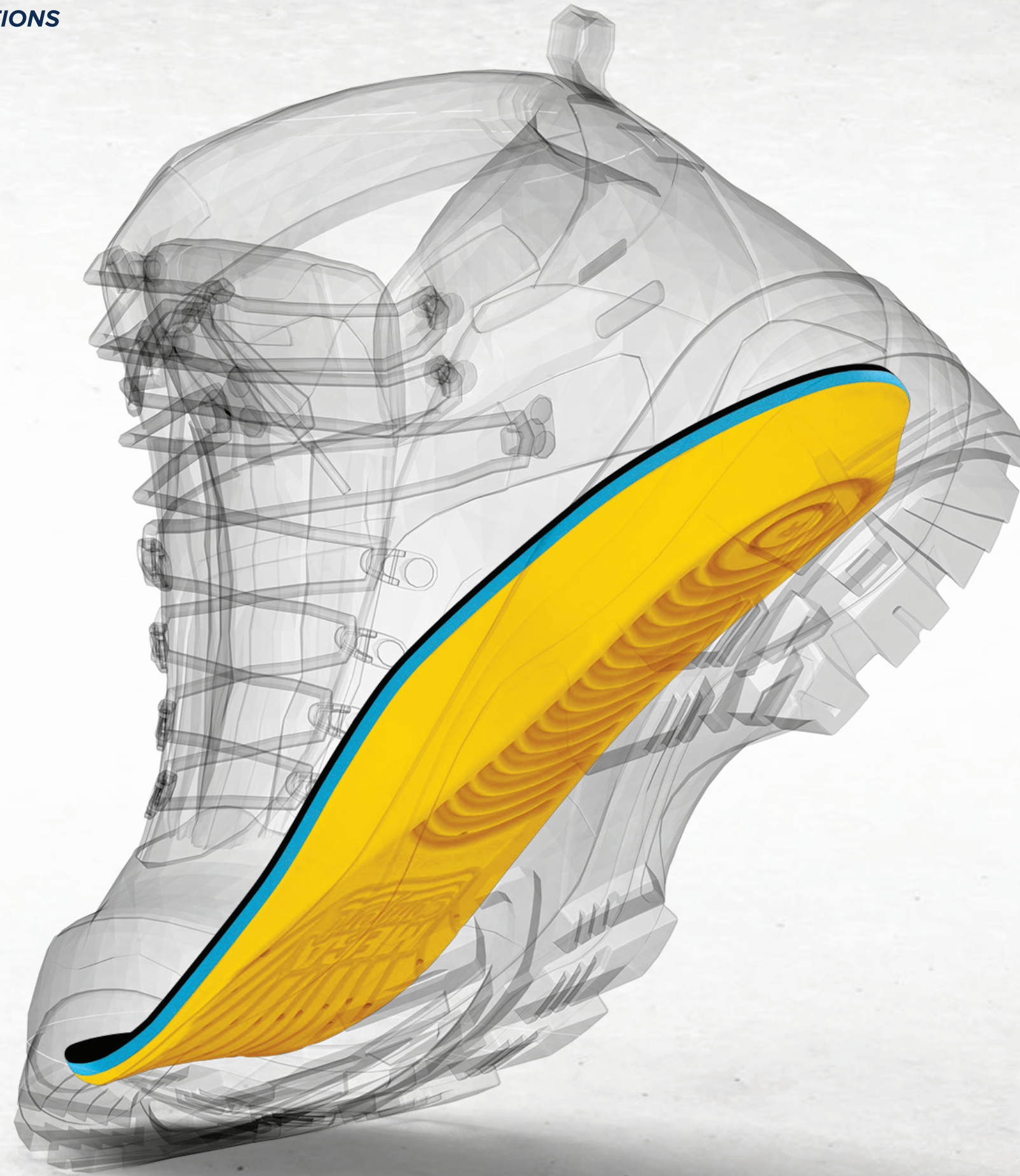
Machine  
Washable





# ***ANTI-FATIGUE COMFORT LINE***

---



## Personal **Anti-Fatigue Mat**<sup>™</sup>

- For maximum shock absorption & comfort
- Memory foam compresses for safe clearance in steel toe footwear
- Cost effective alternative to expensive matting



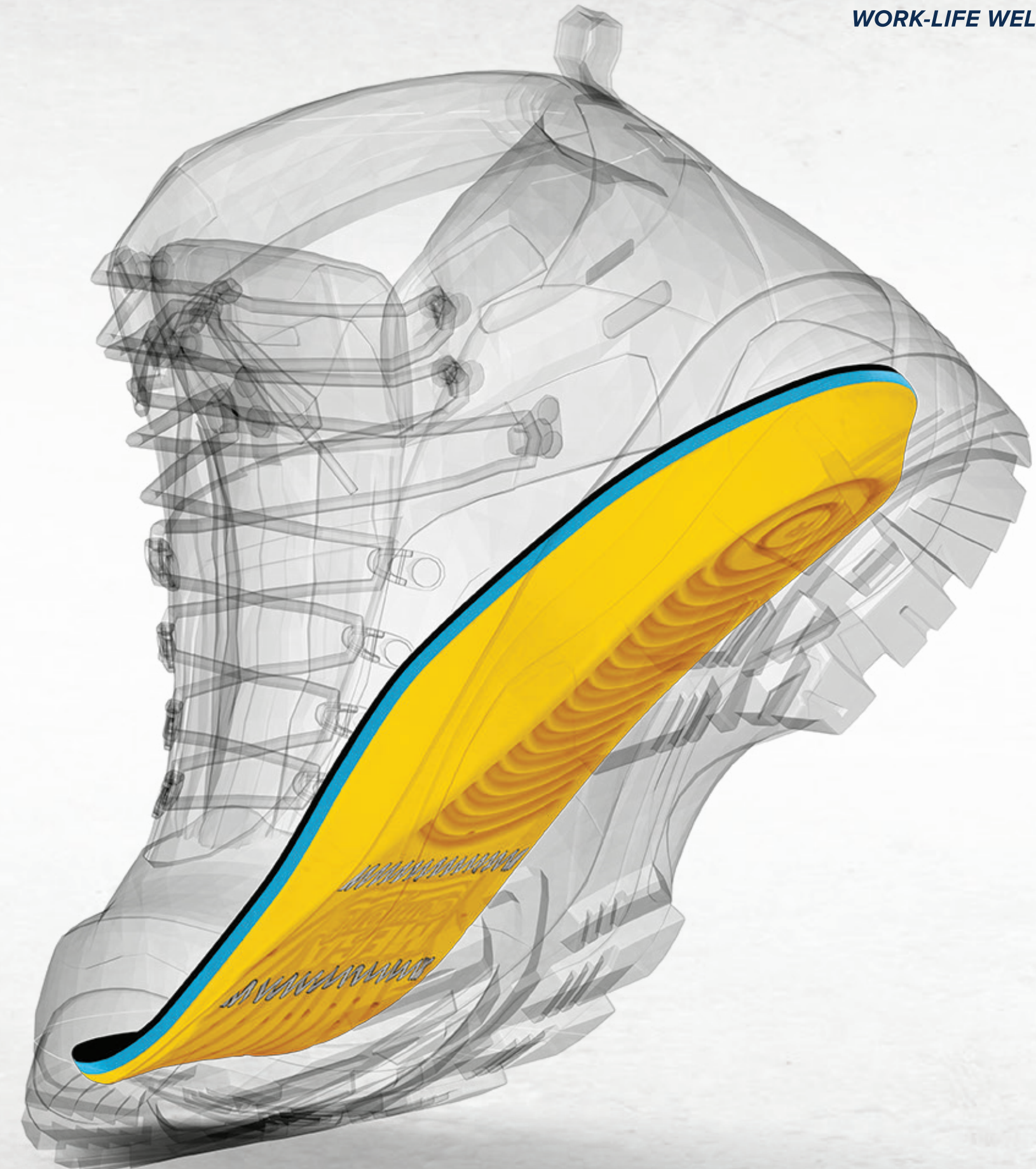
**Industrial**

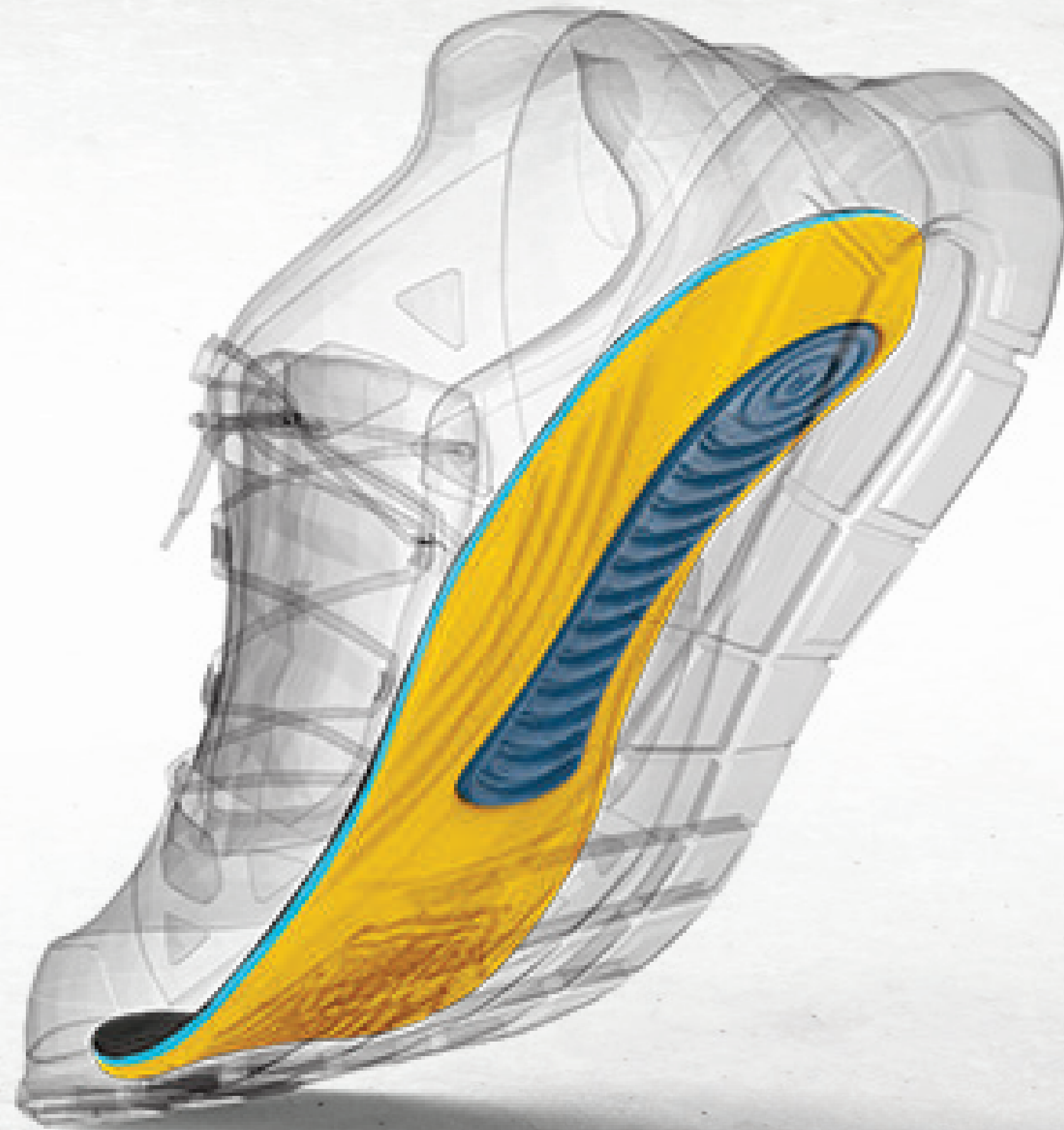
# Personal Anti-Fatigue Mat<sup>™</sup> ESD

- ESD threads provide tested electro-static dissipation
- Cost effective alternative to expensive ESD matting



**Anti-Static Only**





## MegaSole<sup>™</sup>

- Features MEGAGel<sup>™</sup> Visco technology
- Thinner profile for better fit



**Casual & Work**

## MultiThotic<sup>™</sup>

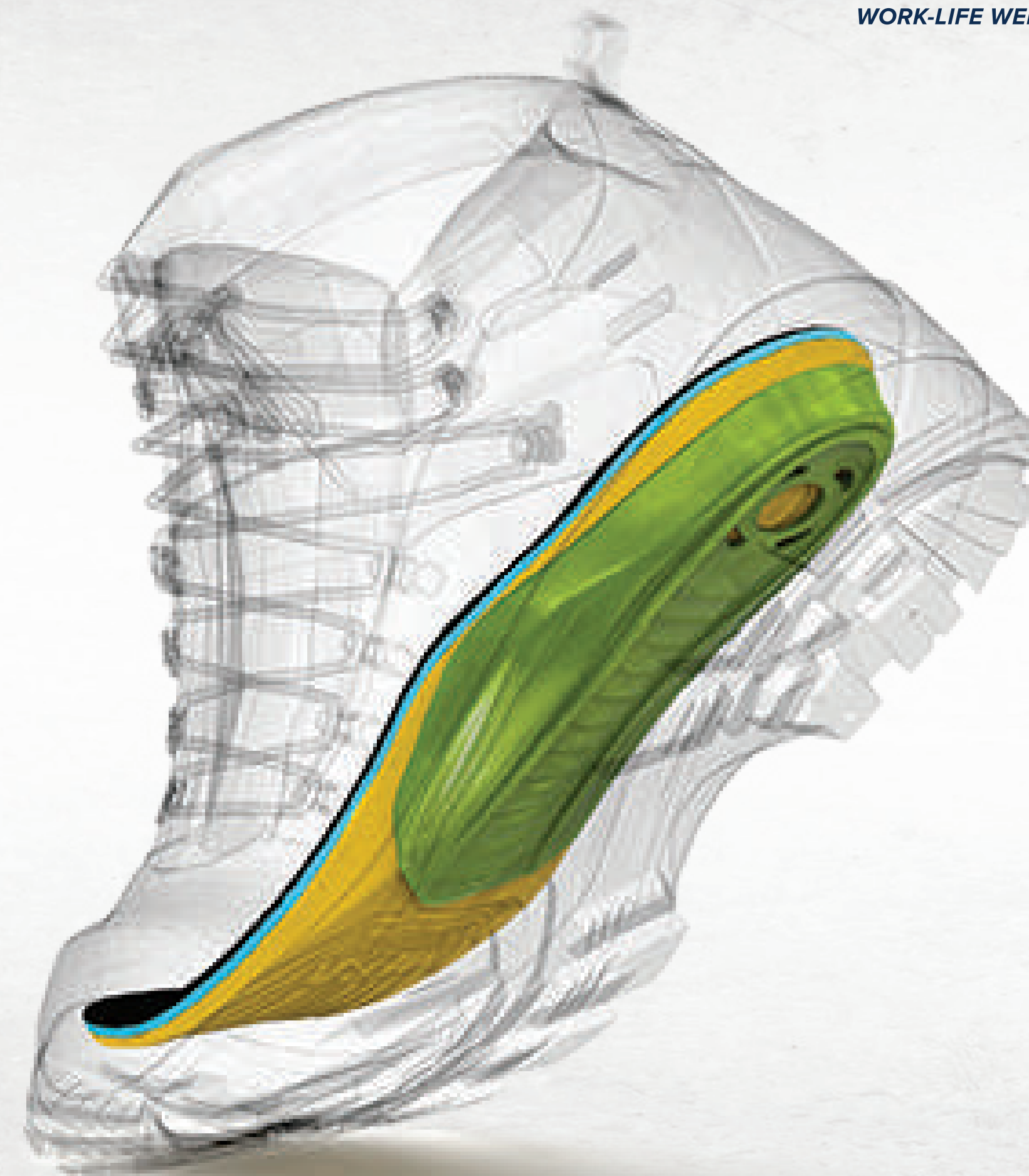
- Cost effective initial replacement to custom made orthotics
- Patented multiple-re-attachable orthotic arch supports

Mild Flat Feet

Extreme Flat Feet



**All Footwear**

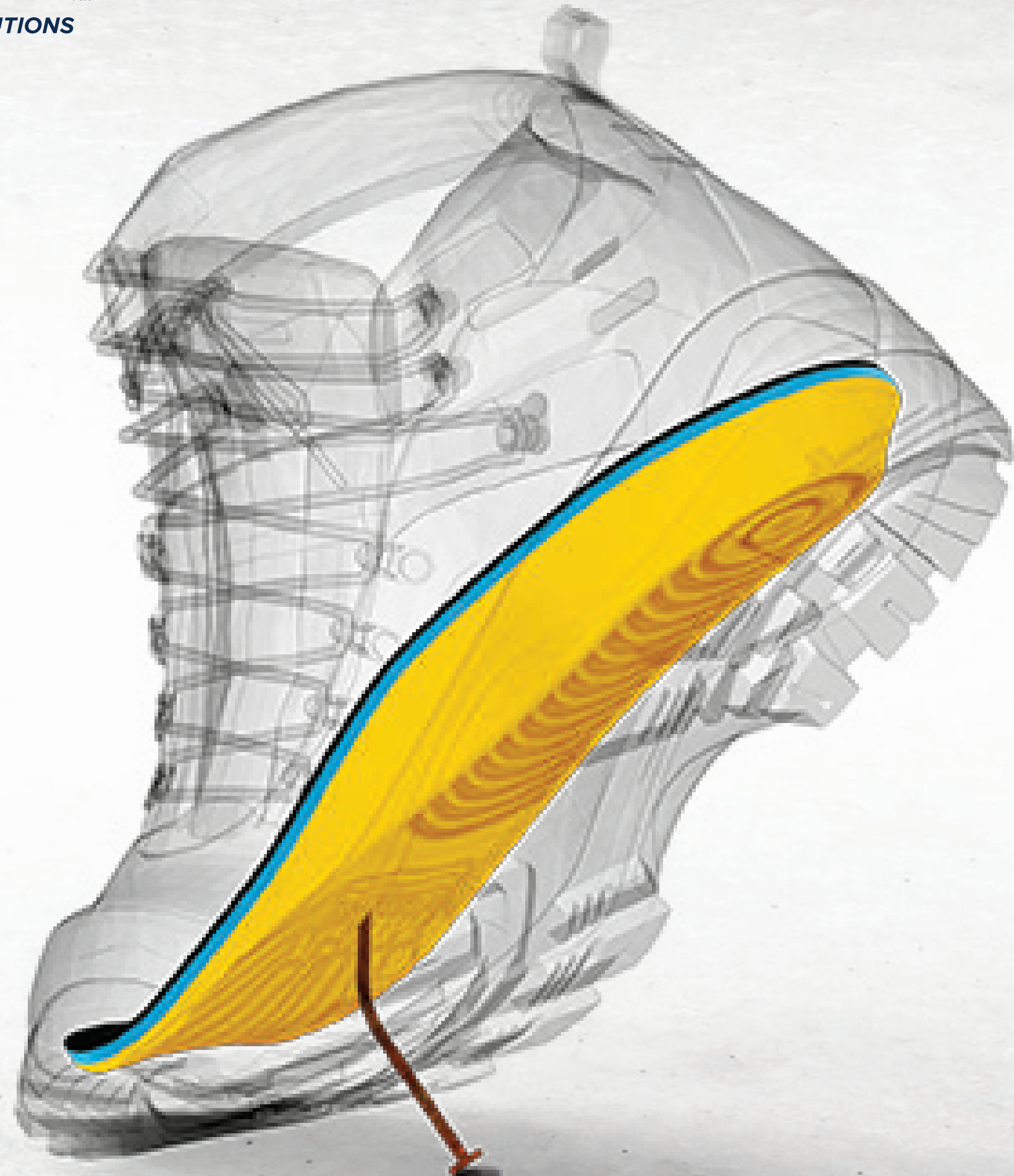






# ***PROTECTION LINE***

---



## PAM

# Puncture-Resistant

- Protects from sharp objects such as shards of glass, metal and nails
- Meets and exceeds ASTM F2413-11 Standard
- Securely placed steel plate

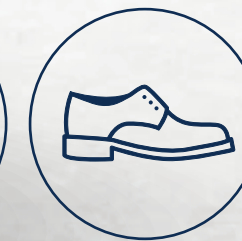


**Industrial & Construction**



## Industrial MegaSock<sup>TM</sup>

- Provides comfort and protection from heat and cold
- Made with 50% wool, 30% nylon, 15% acrylic, 5% other fibers
- Wool is the best fiber for naturally absorbing moisture



**All Footwear**



## AG Compression Sock

- Graduated compression improves circulation
- Replace swelling with comfort & energy
- Stays fresh with silver ion technology
- Meets BSI Standard B7563



**All Footwear**



# ***TECHNOLOGY LINE***

---

COMING SOON

**MEGA**  
**COMFORT**<sup>™</sup>  
WORK-LIFE WELLNESS SOLUTIONS

# ENERGYSOLE<sup>®</sup>

Powered by MEGAComfort

- Powered by ImpactSense Technology
- Real time step by step performance data
- Analyzes step count, pronation, supination and activity time on various surface areas and footwear types
- Easy integration with corporate initiatives and rewards programs
- Long lasting battery





***EFFECTIVE & RESULTS DRIVEN***

---



# UNLOCK. SAVINGS.

## MANUFACTURING

### CHALLENGE

A manufacturer of industrial vacuums is facing potential employee injury and accidental issues with their current anti-fatigue matting solutions. Their facility employs 320 workers and each work-station has anti-fatigue matting installed. However, in the past 2 years, 5 tripping incidents have occurred, **rendering anti-fatigue matting inefficient and dangerous because:**

- Anti-fatigue matting does not cover the 360-degree work area.
- Movement and gradual wear and tear causes the matting to curl, increasing the risk of slips, trips and falls.
- Cleaning and maintenance of the anti-fatigue matting cause inefficiency and a decrease in productivity.



Personal  
Anti-Fatigue Mat™ ESD



# **UNLOCK. SOLUTIONS.**

## **UNLOCK. SOLUTIONS.**

- 360-degree protection for employees across the entire facility, each work station, and beyond.
- Assist in ESD initiatives implemented to reduce static charges from the employees.
- Decreases safety hazards such as slips, trips, and falls that cause sprains, strains.
- Reducing muscle fatigue and foot, knee and back pain.
- Implementation, maintenance, cleaning, and replacement is fast, simple, and affordable.
- Ease of implementation: Through vending (1 pair every 6 months)

## **UNLOCK. SAFETY.**

Through MEGAComfort work safety solutions, the end client will be able to provide all employees with protection at work and beyond, from potential injuries and accidents, reducing absenteeism and healthcare costs.



# UNLOCK. SAVINGS.

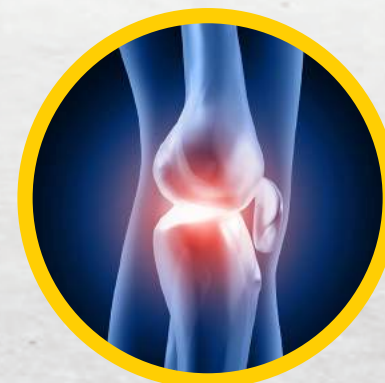
## UNLOCK. ROI.

From the OSHA Safety Pays Calculator, direct and indirect costs for 5 recordable tripping incidents in 2 years equates to **\$428,131**. Including:

**\$403,131** Total estimated ANNUAL COST SAVINGS, After implementation of the MEGAComfort insoles program



Sprain injury  
**\$25,000**



Knee injury  
**\$35,000**



Back injury  
**\$88,000**



# ***HOW TO IMPLEMENT AN INSOLE PROGRAM***

---



**1** | **SET UP A WEAR TEST TRIAL WITH KEY PERSONNEL**  
Using wear test trials, MEGAComfort has on average a 95 percent acceptance rate.

**2** | **INCLUDE INSOLES IN A HEALTH AND WELLNESS PROGRAM**  
It will show proactiveness and care about its employee wellness and comfort, boosting both employee morale and company image.

**3** | **CONSIDER MULTIPLE BUDGETS FOR FUNDING**  
PPE, safety, floor matting, uniforms, wellness or footwear programs.

**4** | **INCLUDE INSOLES AS PART OF A PPE AND FOOTWEAR PROGRAM**

**5** | **GET INSOLES FOR EVERYONE**  
The environment and employee tasks can vary across an organization. For example, some workers may be stationary for most their shift while others are mobile.

# ***PAIN CALCULATOR***



## ***WHY USE THE MEGACOMFORT PAIN CALCULATOR?***

A perfect tool for clients to estimate potential injury cost vs cost savings at their facilities.

- Estimate expenses due to injury (MSD's) cost
- Estimate expenses based on facility size, matting cost, and incidents due to matting
- Shows estimate cost savings by using MEGAComfort Anti-Fatigue Insoles
- No long calculations required – Immediate Cost-benefit analysis within seconds

Download the Pain Calculator: <http://megacomfort.com/pain-calculator/>

# WEAR TEST TRIAL



## **WHY PARTICIPATE IN A WEAR TEST TRIAL?**

Allow all stakeholders to readily experience and measure the benefits of a MEGAComfort Insole Program on small scale before committing on a facility/company wide basis:

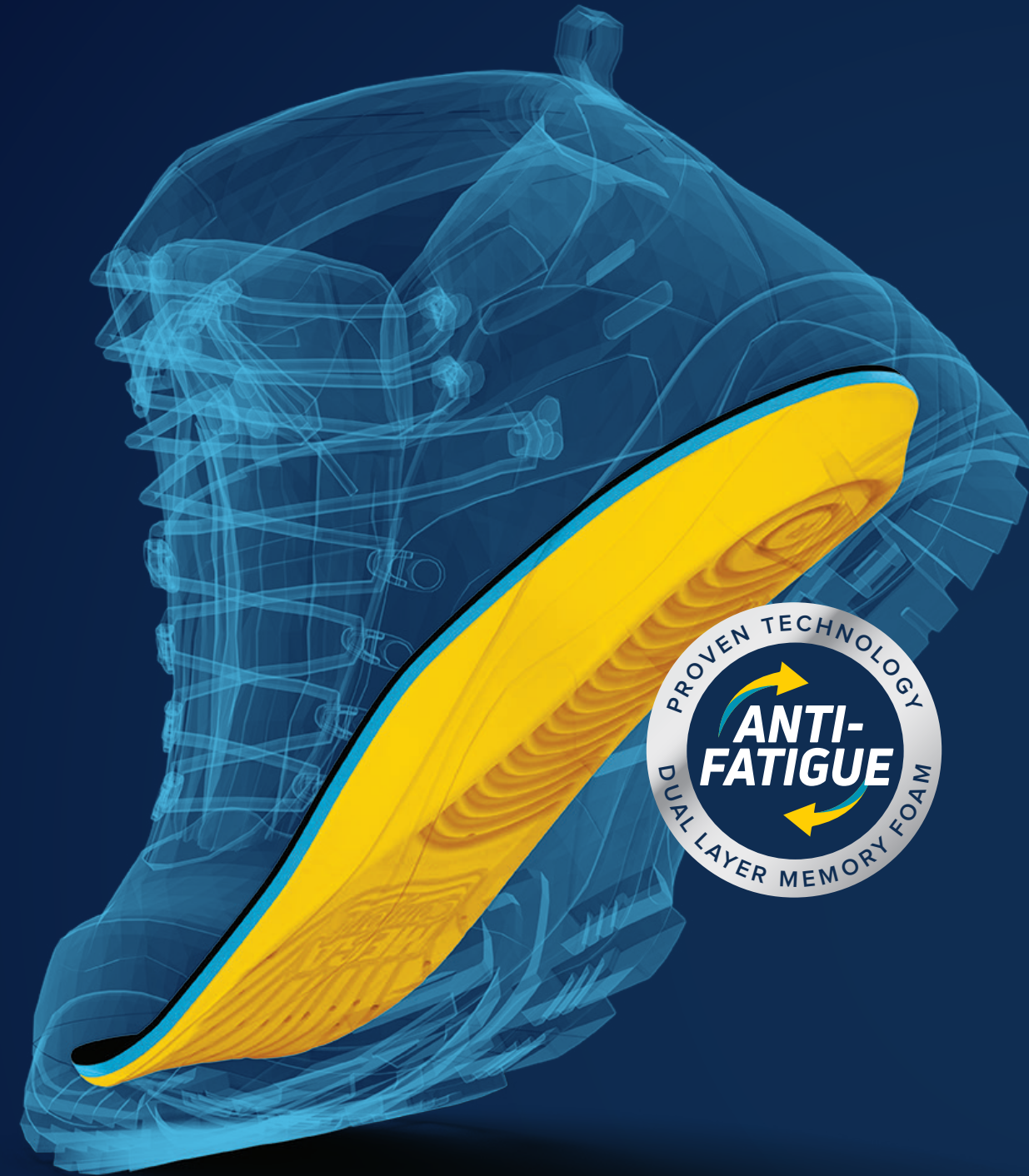
- Which MEGAComfort Insole? (each insole version is recommended based on foot type, activity type and footwear)
- Monitor the difference in foot, knee and back pain as well as comfort and fatigue levels after wearing the insoles for 3-4 weeks
- Forecasting and budgeting for future MEGAComfort Insole needs for all standing or mobile employees in the facility/company

## **WHO CAN PARTICIPATE?**

Facilities with 500+ employees. Suggested quantity for 'Wear Test': 10-20 pairs

Download the Test Trial Policy Document: [megacomfort.com/resources](http://megacomfort.com/resources)

Fill in the Test Feedback: <http://megacomfort.com/weartest/>



# **UNLOCK. POTENTIAL.**

- ✓ Preventative Health & Wellness
- ✓ Reduced Cost & Maintenance
- ✓ Ergonomic & Anti-Fatigue Solution
- ✓ Risk Avoidance & Reduction
- ✓ Safer Facility / OSHA Compliance

**MEGA**  
**COMFORT**<sup>™</sup>  
WORK-LIFE WELLNESS SOLUTIONS

# UNLOCK. *DISTRIBUTION.*



Online | 

In Store | 

Shoe Mobile | 

Vending Machine | 



# UNLOCK. **VENDING.**



Personal  
Anti-Fatigue Mat™



Personal  
Anti-Fatigue Mat™ ESD



MegaSole™

**EASE OF IMPLEMENTATION - VEND FRIENDLY PACKAGING**



**WORK-LIFE WELLNESS SAFETY SOLUTIONS  
ACROSS ALL INDUSTRIES**



***THANK YOU***

---