

Employee Safety

Emerging Trends in Workplace Safety

Brought To You by Lydia Baugh, ISEA | Nov 06, 2017

Workplace safety is a growing concern among workers in the United States, primarily because of negative publicity that some incidents have garnered over the past several years. In 2014 alone, a total of 4,821 people were killed on the job, translating to 13 deaths every day.

Many business people believe that some disturbing emerging trends indicate that an increased demand for workplace safety professionals is necessary. These trends include an increased presence or possibly diagnosis of mental illness, problems with drug abuse and addictions, alcoholism and greater exposure to harmful chemical substances.

Traditionally, workplace deaths have been associated with accidents on the job. These have dropped significantly since 1970 but still remain a problem in certain high-risk industries. The four main causes of workplace deaths are falls, electrocutions, getting struck by an object or becoming caught between two objects.

The U.S. Department of Labor Occupational Health and Safety Administration (OSHA) oversees requirements that make workplaces safer. The challenge, however, remains in changing the approach to workplace safety by emphasizing prevention instead of detection. By establishing positions such as a safety director, a safety manager and a safety coordinator, awareness of safety issues could increase at American companies, creating safer work environments.

To learn more about emerging trends in workplace safety, checkout the new infographic created by Eastern Kentucky University's Occupational Safety program below.

THE CURRENT STATE OF WORKPLACE SAFETY IN THE U.S.

In 2014, there were 4,820 worker fatalities in the U.S., or 13 deaths every day. From 1980 to 2014, there were a total of 288,022 nonfatal injury deaths, with an average of 16 deaths per day. The improvement in workplace safety is discouraging and the demand for workplace safety professionals is growing.

Emerging Trends Causing Increase in Workplace Safety Concerns

MENTAL ILLNESS

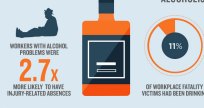


The new Interactive with Disabilities Act requires provisions to be made for an employee with a mental illness. Provisions may include changes in duties, reduced work hours or permission to work from home.

DRUG ABUSE/ADDICTIONS



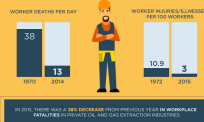
ALCOHOLISM



CHEMICAL PRESENCE



History of Industry-Specific Accidents



CONSTRUCTION'S FATAL FOUR



Workplace Safety Standards



Challenges for Workplace Safety

HISTORICALLY, THE VIEW OF WORKPLACE SAFETY HAS BEEN BASED ON DETECTION, NOT PREVENTION, AND THE BELIEF THAT "INCIDENT" ACTIONS COULD BE HELP AVOIDABLE BY WORKERS.



WORKPLACE SAFETY JOB PROFILES



As workplace safety procedures increase, so do the opportunities to obtain various certifications that can help you establish a successful foundation.



www.equ.com

WORKPLACE SAFETY PROFESSIONALS ARE IN DEMAND. GET THE TRAINING AND SUPPORT YOU NEED TO SUCCEED IN YOUR CAREER.

