

Personal Protective Equipment

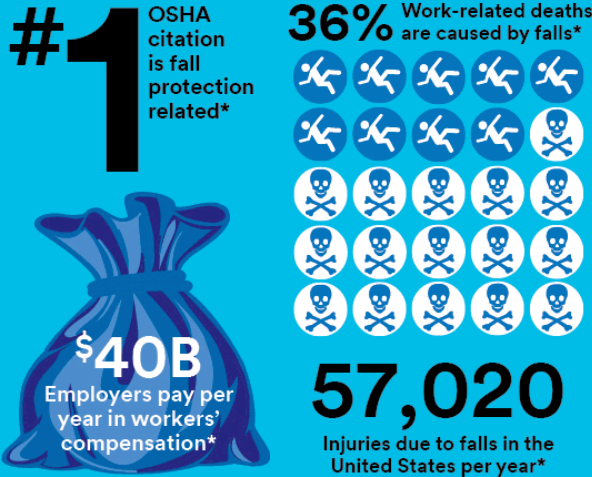
How Safety and Comfort Can Co-Exist

| Apr 13, 2017

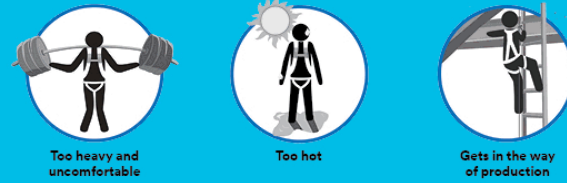
Despite alarming (OSHA) statistics - which indicate falls from height remain the number one cause of death in the construction industry - getting workers to use their fall protection every single time while working at height is still a challenge. But don't let fall protection equipment discomfort be an excuse for not using it. Comfort and safety can co-exist.

Are you wearing a comfortable harness?

Despite alarming (OSHA) statistics—which indicate falls from height remain the number one cause of death in the construction industry—getting workers to use their fall protection every single time while working at height is still a challenge. But don't let fall protection equipment discomfort be an excuse for not using it. Comfort and safety can coexist.



Major complaints about safety harnesses:



You can't always reduce the weight of the equipment you carry, but you can change the way your body carries it!

3M™ DBI-SALA® ExoFit STRATA™ Full-Body Harness

LIFTech System
Redistributes the weight off your shoulders to the base of your hips.

PolarMesh Padding
Increases airflow to your back, resulting in superior breathability that helps keep you cool.

Revolver Adjusters
Locks harness-fit into place to maintain comfort.



Does your harness match up?

Average harness	ExoFit STRATA	
<input type="checkbox"/>	<input checked="" type="checkbox"/>	Less shoulder weight while standing
<input type="checkbox"/>	<input checked="" type="checkbox"/>	Less shoulder weight while reaching
<input type="checkbox"/>	<input checked="" type="checkbox"/>	Redistributes weight from shoulders to the hips

Can safety and comfort coexist?
Yes. And it does. Learn more about the ExoFit STRATA Full-Body Harness.

3M.com/FallProtection
* Labor, U.S. (2014). Top 10 Most Frequently Cited Standards. Retrieved 2015, from Occupational Safety & Health Administration: https://www.osha.gov/Top_10_Standards.html
 * Labor, U.S. (2014). Occupational Safety & Health Administration. Retrieved 2015, from Commonly Used Statistics: <http://www.osha.gov/csl/stats/commstats.html>
 * Stephens, A. S. (2015). Return on Investment (ROI) for Safety, Health, and Environmental (SH&E) Management Programs. Retrieved 2015, from News Article @ <http://www.enr.com/story/2015/04/01/return-on-investment-for-safety-health-and-environmental-management-programs>
 * Labor, U.S. (2014). National Occupational Injuries and Illnesses Requiring Days away from Work. Retrieved 2015, from News Release: http://www.bls.gov/news.release/archives/osh2_12052014.pdf

