

Personal Protective Equipment

# How to Properly Doff Mechanical Gloves

Brought To You by Ansell | Aug 19, 2020

## Doffing Between Uses

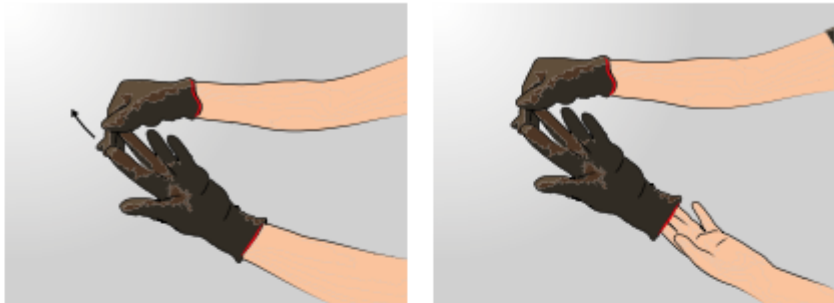
Proper doffing and disposal of protective reusable gloves is key to helping prevent the spread of viruses between workers and their surrounding environments. Follow the illustrations below to properly doff mechanical gloves in order to disinfect and re-use.

**STEP 1 – Loosen Glove at Fingertips**



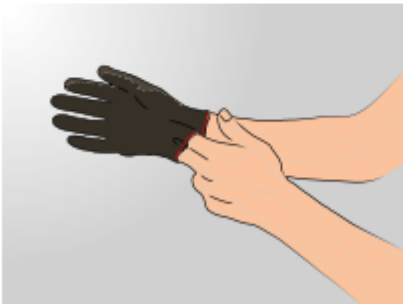
Pull one glove loose at the fingers using the opposite hand, but **do not remove the glove completely**

**STEP 2 – Loosen Opposite Glove at Fingertips and Remove**



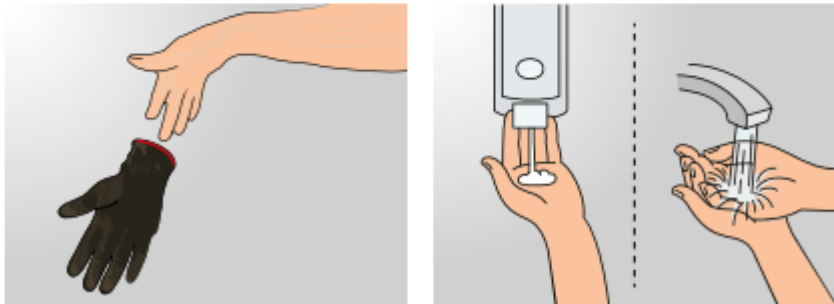
Use the first hand with a loosened glove to **pull the second glove loose at the fingers**, and then pull the glove off

**STEP 3 – Slide Glove Off**



**Slide two fingers inside the cuff** of the first glove and slide it off the hand

**STEP 4 – Wash Hands**



Always **wash your hands with soap and water for 20 seconds** after removing PPE

For more information on how to properly sanitize reusable Mechanical gloves between laundering cycles, visit the [\*Mechanical Protection Resources\*](#) section on the Ansell Safety Resources page.

## Doffing at the End of a Glove's Life Cycle

Proper doffing and disposal of protective reusable gloves is key to helping prevent the spread of viruses between workers and their surrounding environments. Follow the illustrations below to properly doff

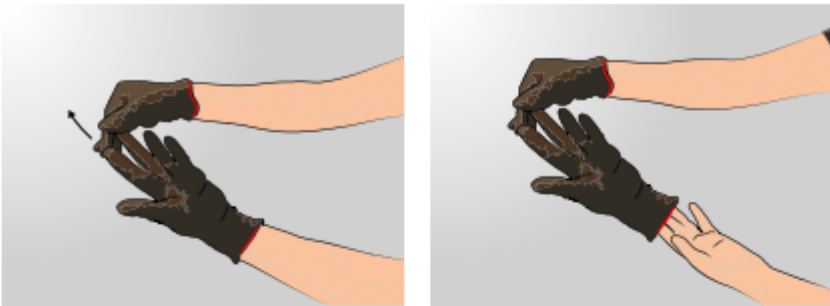
mechanical gloves at the end of their life cycle.

**STEP 1 – Loosen Glove at Fingertips**



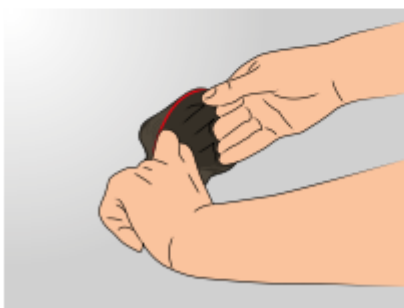
Pull one glove loose at the fingers using the opposite hand, but **do not remove the glove completely**

**STEP 2 – Loosen Opposite Glove at Fingertips and Remove**



Use the first hand with a loosened glove to **pull the second glove loose at the fingers**, and then pull the glove off

**STEP 3 – Turn Glove Inside-Out and Remove**



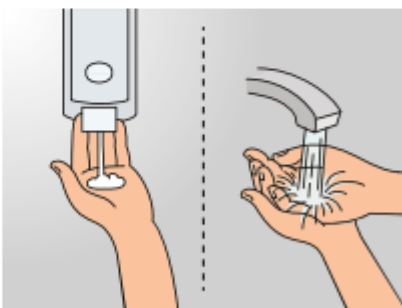
**Slide two fingers inside the cuff** of the first glove and remove, **turning the glove inside out** as it slides off the hand

**STEP 4 – Dispose of Gloves Properly**



Glove disposal depends on prior use. Contaminated gloves should be **disposed of per the guidelines** of the contaminant source

**STEP 5 – Wash Hands**



Always **wash your hands with soap and water for 20 seconds** after removing PPE

*Previously Featured on Ansell's Media Center.*

[www.mscdirect.com/betterMRO](http://www.mscdirect.com/betterMRO)

Copyright ©2024 MSC Industrial Supply Co.